



**Delivering impactful  
learning and career  
development in the UK**

[edt.org](https://edt.org)



## Our work in the UK

Working closely with educators, including early years settings, young people, adults, and businesses, we provide careers, employment, and skills support.

Incorporating insights from our global experience into our practice, we deliver expert knowledge, programme design and implementation methods through trusted partnerships with governments, academics, and multilateral agencies. We help clients and partners apply their knowledge to local contexts to benefit all learners, particularly those in the most disadvantaged communities.

We work with:

**Schools and early years settings** – we empower schools, enabling them to support each other and lead improvement.

**Adults** – we deliver high quality CPD programmes for teachers and leaders. Our Careers Services for adults support them into learning and employment.

**Young people** – we provide careers guidance, supporting aspirations and improving attainment in schools, colleges and other organisations, delivered in partnership.

**Business and partnerships** – we collaborate with thousands of employers, helping to facilitate links with education and skills initiatives, benefitting their business and the local community.

Bridging the gap between education, training and employment is a key part of our mission, as reflected in our latest annual impact findings:



18,000

**School leaders  
engaged with our  
programmes**



1,6000,000

**Learners  
reached**



50,000

**Adults supported  
through our Careers  
Services work**



3,600

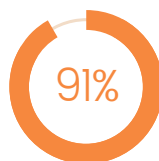
**Careers advice  
days delivered  
in schools**

EDT's flagship UK programme, SPP was developed with schools and leading education experts and provides a collaborative approach, supporting continuous school and system improvement. One of the UK's farthest-reaching peer review models, its unique framework is informed by research evidence and benefits from a global network of partners. This makes SPP distinctive and highly effective.

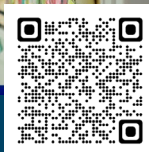
We provide the training, resources and network necessary to enable school leaders to collaboratively address areas for improvement and evaluate the impact; with the added rigour of objective peer review and joint accountability.



**rated the SPP resources,  
framework and training  
materials as very high quality**



**said they feel ready to  
implement peer review  
in their own school**



# Early Years

Professional Development Programme

EYPDP is Department for Education (DfE) funded and offers flexible, high quality, evidence-based and accessible online training, developed in partnership with the Anna Freud Centre and Speech and Language UK.

Aimed at early years practitioners, this CPD (continuous professional development) programme is designed to improve understanding and provide skills, for those working with children aged two to four. The focus of the programme is to improve outcomes in school readiness, early language, early mathematics and Personal, Social and Emotional Development (PSED).

87%

**of early years practitioners would recommend it to others**

10,000

**funded training places available in the latest phase of delivery**

98%

**England's local authority areas participating**



✉ [EarlyYearsPDP@edt.org](mailto:EarlyYearsPDP@edt.org)

🌟 [EarlyYearsPDP.com](https://www.EarlyYearsPDP.com)

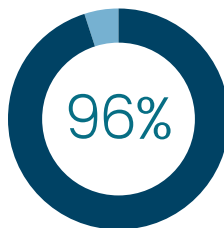
✕ [f](#) [i](#) [@EarlyYearsPDP](#)

Delivered through the Early Career Framework (ECF), throughout the programme early career teachers (ECTs) learn valuable skills to put into practice in the classroom and receive structured support **to help them be the best teachers they can be.**

Developed in partnership with schools and the expert teacher-educators at Sheffield Institute of Education, Sheffield Hallam University, the programme provides teachers with essential specialist support to strengthen their practice and build confidence during the two years following their Initial Teacher Training (ITT).

98%

of ECTs use what  
they have learnt in  
their own practice



of first year ECTs  
completed the  
year and will  
continue to Year 2



Our NPQs empower teachers, school leaders and early years leaders to create conditions for change and embed evidence-informed teaching and learning at their levels of control.

All of our NPQ programmes have been developed by a team of in-house experts in collaboration with a national network of schools. We also work in partnership with Sheffield Hallam University's Institute of Education, and Evidence Based Education, ensuring our NPQs are infused with expertise and rooted in evidence.

Each NPQ is designed to slot into a busy schedule, with a focus on accessible, bite-size online learning. Our national network of Delivery Partners ensure that participants are never too far from a group that will suit their needs, led by local experts who provide training and one-to-one support.

# 97%

**of participants  
found their NPQ to  
be useful for their  
professional goals**



# 99%

**of participants who  
completed an NPQ  
with us said they were  
'satisfied' or 'very  
satisfied' with the course**

\*From Cohort 2 Leadership  
End of Programme Survey

The DfE's National Tutoring Programme (NTP) supports schools, by providing funding to spend on academic support, delivered by trained and experienced tutors and mentors.

EDT provides evidence-based, self-directed and accessible training for NTP School-Led Tutors and Academic Mentors.

The NTP training course is designed to help schools and tutors plan for and deliver effective small group and 1:1 tuition in the school setting. The training content brings together a vast array of research on small group tutoring and useful resources for various subjects and phases.

EDT also provides CPD resources including free live seminars to support tutors throughout their career, as well as supporting school leaders to embed tutoring within their organisation.

76%

**of state-funded  
schools participated  
in the NTP in 2022/23\***

95%

**of tutors saw a  
positive impact  
on pupils**

\*From the start of 2022/23 academic year up to May 2023.





Providing senior leadership teams with the tailored support, training and advice needed to improve behaviour culture and generate lasting cultural change that is tailored to each individual school.

Funded by the DfE, our flagship behaviour management scheme in England offers a blend of school-to-school support, along with training delivered by expert behaviour advisers – empowering schools to make sustainable and impactful changes to their behaviour culture.

600+

**schools and MATs  
taking part in the  
programme**

100%

**of schools that graduated in July 2023  
would recommend Behaviour Hubs to  
schools with similar behaviour issues**



Our Inspiring Careers Programme supports schools and colleges to realise their statutory responsibilities. The broad range of services provided are tailored to their needs in achieving all eight Gatsby Benchmarks, including impartial careers guidance sessions, and end-to-end work experience and consultancy; fulfilling the Quality in Careers Standard.

18,870

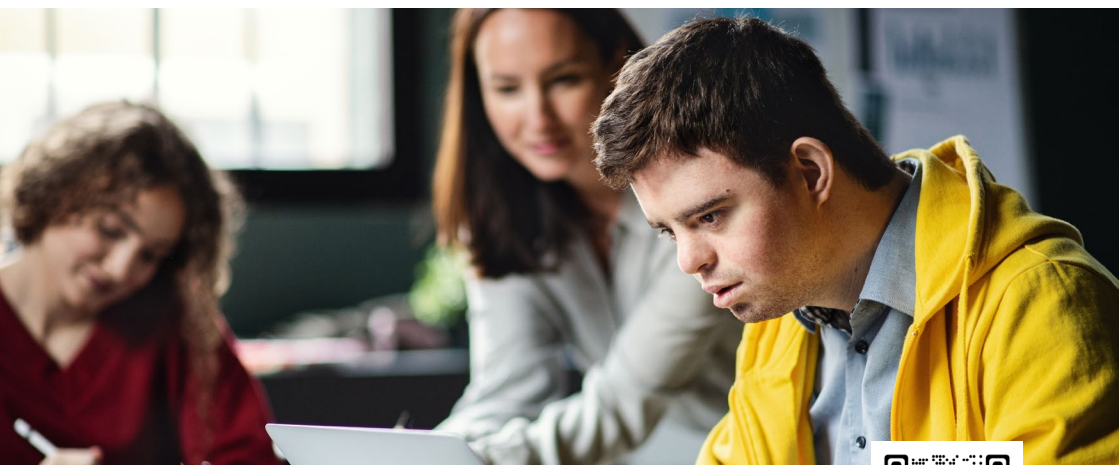
young people we  
supported in the  
last academic year

99.5%

of young people felt  
they had the same  
or better clarity on  
their goals

99.6%

of young people  
felt they had the  
same or better  
career planning  
after receiving  
their Action Plan



 [Careersinfo@edt.org](mailto:Careersinfo@edt.org)





This six-year programme, funded by the DfE, provides a unique approach to teacher training that supports exceptional maths and physics students (Scholars) on their route into teaching.

Scholars continue in-depth study of their subjects via an undergraduate degree, whilst also learning about teaching and undertaking practical in-school experiences prior to their ITT. The programme continues to provide support to Scholars as they become qualified teachers and complete their early career teaching induction.



\*Compared with the national figure of 76%



---

**edt.org**

Highbridge House, 16-18 Duke Street,  
Reading, Berkshire RG1 4RU  
T +44 (0) 118 902 1000 E [info@edt.org](mailto:info@edt.org)

✕ @EDTvoice